



PHL Single and Multi Filter Housing

In-line sanitary liquid and gas

- Sanitary T-Style Liquid filter housing designed specifically for Food & Beverage and Pharmaceutical applications
- Full range from 1 to 8 cartridges, 10" to 40"
- Designed for applications with dangerous liquid and gas at high temperature.
- Bolted clamp (singles) / screw clamp (multi's) safety closure
- Suitable for SIP and CIP
- Full material traceability
- Food Grade EC 1935/2004 compliance



Specifications

Materials of Construction

Housing: 316L/1.4404
Seal Material: Silicone⁽¹⁾ / EPDM / Viton / FEP enc. Silicone

Surface finish

Internal: Mechanical Polishing⁽¹⁾
Internal (downstream) <0.8um Ra⁽¹⁾ / <0.4um Ra
External: Mechanical Polishing

Cartridge Socket: C (226) Style
Number of Cartridges: 1, 3, 5 & 8

Technical Design Data

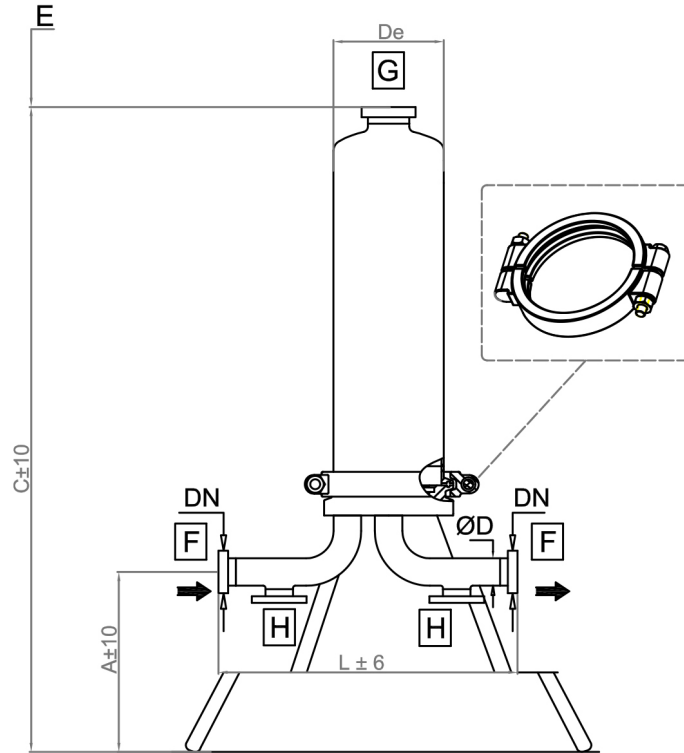
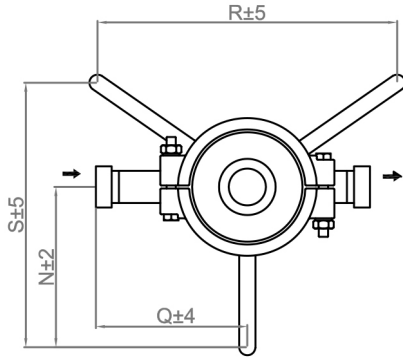
Design Code: EN 13445
Certification: PED 2014/68/EU
PED Fluid Group: 1 & 2
PED Fluid State: Liquid & Gas
ATEX Regulation: Group 2, CAT 2 Gas & Dust
Fluid GR IIIC, Zone 1 & 21

Design Pressure: -1 to 10 Bar
Design Temperature: -20 to 150°C

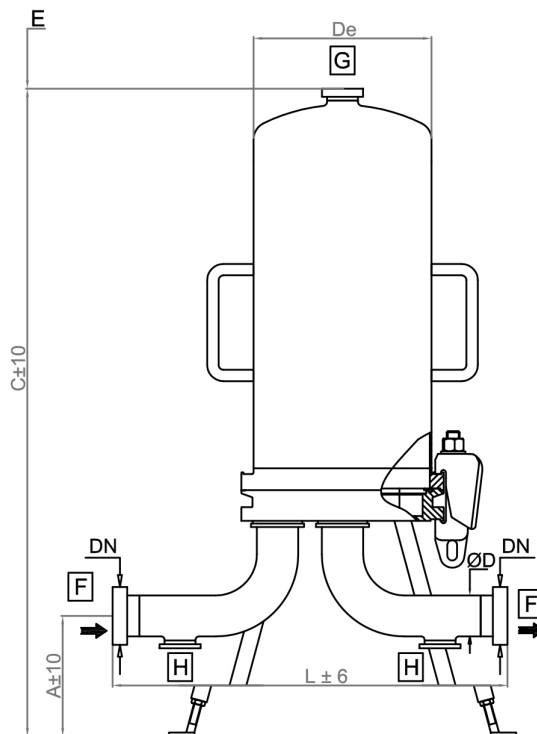
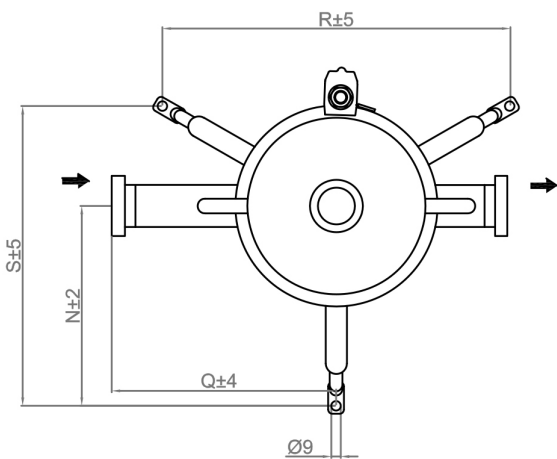
Certification: Supplied as standard with IOMI and vessel inspection certificate

⁽¹⁾ Standard Option

PHL01



PHL03, 05 & 08



Available connections

F (Inlet / Outlet)	Tri-Clamp	Weld (ASME BPE)	DIN 11851 (Male)	EN 1092-1 Flange	ANSI 150 Flange
G (Vent)	Tri-Clamp	Tri-Clamp	DIN 11851 (Male)	DN20 EN1092-1	¾" ANSI 150
H (Drain)	Tri-Clamp	Tri-Clamp	DIN 11851 (Male)	DN20 EN1092-1	¾" ANSI 150

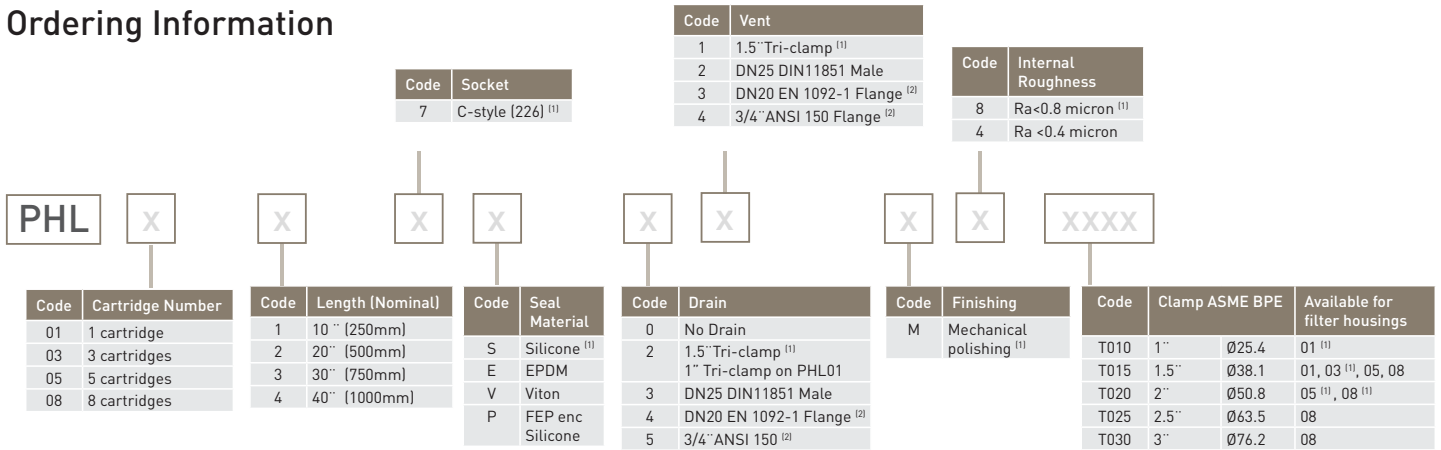
Dimensions

Vessel Model	Cartridge Length	De (mm)	C (mm)	E (mm)	R (mm)	S (mm)	N (mm)	Total Volume (Litres)	PED Category
PHL011	01 x 10"	Ø101.6	790	330	339	326	207	3.0	I
PHL012	01 x 20"		1040	580	339	326	207	4.8	I
PHL013	01 x 30"		1290	830	339	326	207	6.7	II
PHL014	01 x 40"		1540	1080	339	326	207	8.6	II
PHL031	03 x 10"	Ø168.3	816	330	357	310	206	7.3	II
PHL032	03 x 20"		1065	580	357	310	206	12.6	II
PHL033	03 x 30"		1314	830	357	310	206	17.6	II
PHL034	03 x 40"		1564	1080	357	310	206	23.1	III
PHL051	05 x 10"	Ø219	828	330	400	347	231	11	II
PHL052	05 x 20"		1078	580	400	347	231	20	III
PHL053	05 x 30"		1328	830	400	347	231	29.1	III
PHL054	05 x 40"		1578	1080	400	347	231	38.2	III
PHL081	08 x 10"	Ø273	846	330	448	388	259	21.3	III
PHL082	08 x 20"		1096	530	448	388	259	35.5	III
PHL083	08 x 30"		1396	830	448	388	259	49.7	III
PHL083	08 x 40"		1596	1080	448	388	259	63.9	III

Inlet / Outlet Connection																			
Vessel Model	Weld ASME BPE						DIN 11851 Male						Tri-Clamp						A
			Without Drains		With Drains				Without Drains		With Drains				Without Drains		With Drains		
	DN	Ø	L	Q	L	Q	DN	Ø	L	Q	L	Q	DN	Ø	L	Q	L	Q	
PHL01	1.0	24.5	163	91	244	141	25	25.4	221	120	302	170	1.0	25.4	189	104	270	154	375
	1.5	38.1	194	112	345	185	40	38.1	258	144	415	217	1.5	38.1	220	122	370	198	355
PHL03	1.5	38.1	285	135	360	210	40	38.1	351	168	426	243	1.5	38.1	310	148	385	228	345
PHL05	1.5	38.1	305	155	380	230	40	38.1	371	188	446	263	1.5	38.1	331	168	406	243	345
	2.0	50.8	353	183	420	250	50	50.8	423	218	490	285	2.0	50.8	379	196	446	263	315
PHL08	1.5	38.1	385	181	467	256	40	38.1	451	214	542	289	1.5	38.1	411	194	502	269	345
	2.0	50.8	379	209	446	276	50	50.8	449	244	516	311	2.0	50.8	405	222	472	289	315
	2.5	63.5	442	230	522	310	65	63.5	518	268	602	350	2.5	63.5	468	243	548	323	286
	3.0	76.2	498	258	578	338	80	76.2	588	303	658	383	3.0	76.2	524	271	604	351	258

Vessel Model	EN 1092-1 / ANSI 150 Flange						
			With Drain		With Drain		A
	DN	Ø	L	Q	L	Q	
PHL01	25 / 1.0"	33.7	237	116	507	265	365
	25 / 1.0"	33.7	322	161	520	290	332
PHL03	32 / 1.25"	42.4	341	170	541	300	323
	40 / 1.5"	48.3	321	160	560	309	377
PHL05	25 / 1.0"	33.7	358	166	538	306	339
	32 / 1.25"	42.4	357	186	557	316	311
	40 / 1.5"	48.3	376	196	576	325	301
	50 / 2.0"	60.3	394	195	614	344	318
PHL08	25 / 1.0"	33.7	426	194	566	334	320
	32 / 1.25"	42.4	445	195	585	344	311
	40 / 1.5"	48.3	454	204	604	353	301
	50 / 2.0"	60.3	472	223	642	372	328

Ordering Information



Code	Cartridge Number
01	1 cartridge
03	3 cartridges
05	5 cartridges
08	8 cartridges

Code	Length (Nominal)
1	10" (250mm)
2	20" (500mm)
3	30" (750mm)
4	40" (1000mm)

Code	Socket
7	C-style (226) ⁽¹⁾

Code	Seal Material
S	Silicone ⁽¹⁾
E	EPDM
V	Viton
P	FEP enc Silicone

Code	Drain
0	No Drain
2	1.5" Tri-clamp ⁽¹⁾ 1" Tri-clamp on PHL01
3	DN25 DIN11851 Male
4	DN20 EN 1092-1 Flange ⁽²⁾
5	3/4" ANSI 150 ⁽²⁾

Code	Finishing
M	Mechanical polishing ⁽¹⁾

Code	Clamp ASME BPE	Available for filter housings
T010	1" Ø25.4	01 ⁽¹⁾
T015	1.5" Ø38.1	01, 03 ⁽¹⁾ , 05, 08
T020	2" Ø50.8	05 ⁽¹⁾ , 08 ⁽¹⁾
T025	2.5" Ø63.5	08
T030	3" Ø76.2	08

Code	DIN 11851 Male	Available for filter housings
D025	DN25 Ø25.4	01 ⁽¹⁾
D040	DN40 Ø38.1	01, 03 ⁽¹⁾ , 05, 08
D050	DN50 Ø50.8	05 ⁽¹⁾ , 08 ⁽¹⁾
D065	DN65 Ø63.5	08
D080	DN80 Ø76.2	08

Code	Weld ASME BPE	Available for filter housings
W025	Ø25.4 x 1.65mm	01 ⁽¹⁾
W038	Ø38.1 x 1.65mm	01, 03 ⁽¹⁾ , 05, 08
W051	Ø50.8 x 1.65mm	05 ⁽¹⁾ , 08 ⁽¹⁾
W063	Ø63.5 x 1.65mm	08
W076	Ø76.2 x 1.65mm	08

Code	Flange EN1092-1	Available for filter housings
E025	DN25 Ø33.7	01, 03
E032	DN32 Ø42.4	03, 05, 08
E040	DN40 Ø48.3	03, 05, 08
E050	DN50 Ø60.3	08
E065	DN65 Ø60.3	08

Code	Flange EN1092-1	Available for filter housings
A100	1" Ø33.7	01, 03
A125	1.25" Ø42.4	03, 05, 08
A150	1.5" Ø48.3	03, 05, 08
A200	2" Ø60.3	05, 08
A250	2.5" Ø60.3	08
A300	3" Ø60.3	08

⁽¹⁾ Standard configuration (offers better lead-time)
⁽²⁾ Only available when inlet/outlet connection = flanges

